



**Cumberland
Lodge**
Empowering conversations

Specifications & Layouts



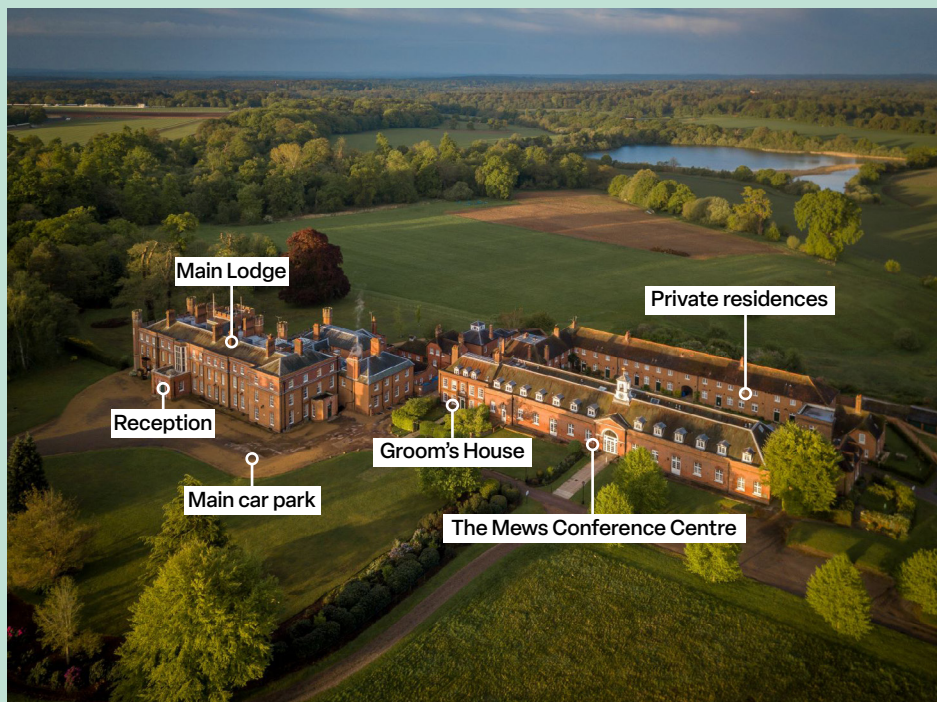
+44 (0)1784 432316
enquiries@cumberlandlodge.ac.uk
cumberlandlodge.ac.uk

Cumberland Lodge is a truly distinctive venue in the heart of Windsor Great Park, noted for its historic reception rooms, modern conferencing facilities, excellent food, and exceptional quality of service.

Our stunning facilities are available to hire throughout the year, for a wide range of residential and non-residential events.

We offer a stimulating and reflective setting for conferences, meetings, retreats, away-days and professional development courses, away from the hustle and bustle. We also host all kinds of special events, including weddings and receptions. Take a 3D virtual tour at cumberlandlodge.ac.uk/buildings-and-facilities

By hiring our rooms and facilities you will be actively supporting our work as a charity that empowers people, through dialogue and debate, to tackle the causes and effects of social division.



We can't change what we don't understand. That's why, in a world of extreme inequality and political polarisation, we believe it's not our differences that divide us, but our inability to recognise, discuss, debate and respect those differences.

Cumberland Lodge is an educational charity and social enterprise that exists to empower young people to lead the conversation around social division. Providing them with the skills, perspective and confidence to question, challenge and understand some of the most complex social issues of our time.

Set in the heart of Windsor Great Park, this is a space for challenging conversations. An open door to new perspectives. Where great minds don't always think alike.

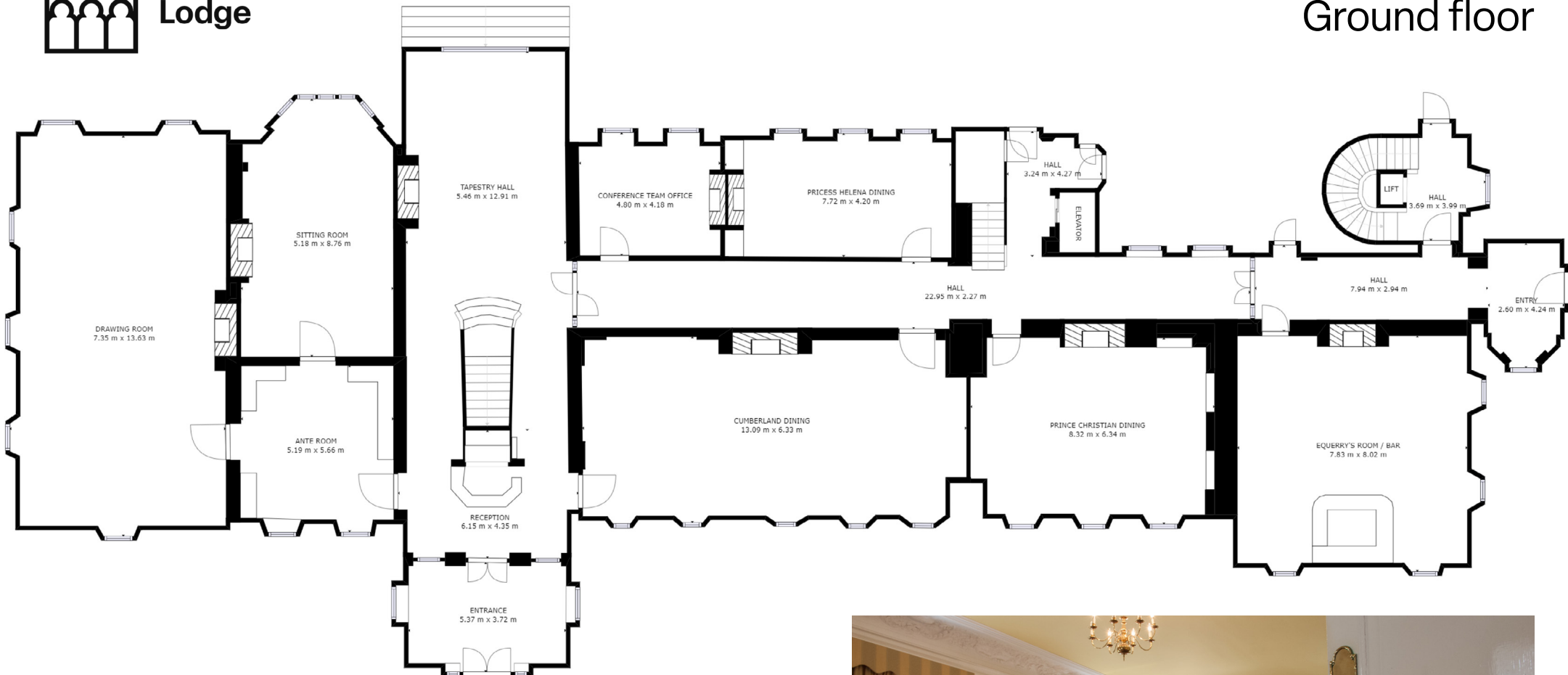
A place where a multi-generational, intercultural, cross-sector programme of conferences, talks and events means that people from all walks of life, can come together to be seen, heard and understood.

A space for common ground. Where open dialogue can close divides. And the leaders and change makers of the future can learn how to agree to disagree, better – creating a more peaceful, open and inclusive society, one conversation at a time.



Cumberland Lodge

Main Lodge Ground floor



Room capacities

Drawing Room: 60

Sitting Room: 18

Dining capacities

Cumberland Dining Room: 64

Prince Christian Dining Room: 40

Cumberland Dining Room and Prince Christian Dining Room (combined): 100

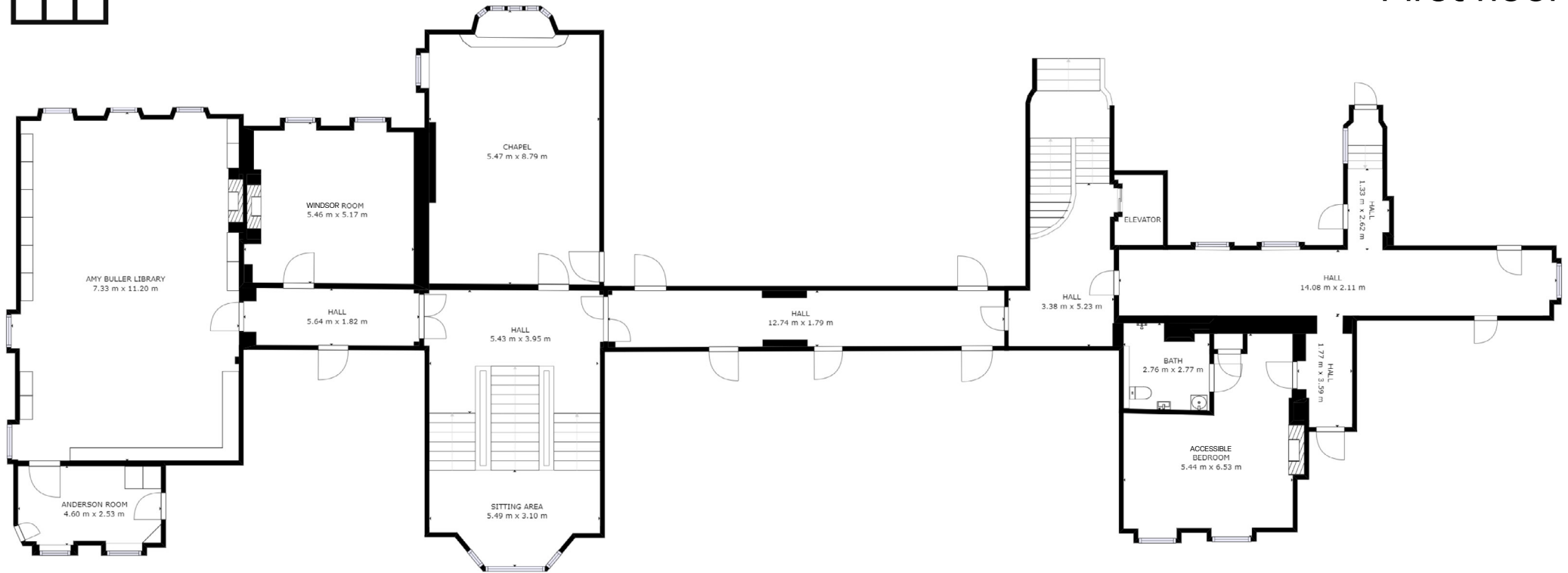
Princess Helena Dining Room: 16





**Cumberland
Lodge**

Main Lodge First floor



Room capacities

Amy Buller Library: 25

Chapel: 30

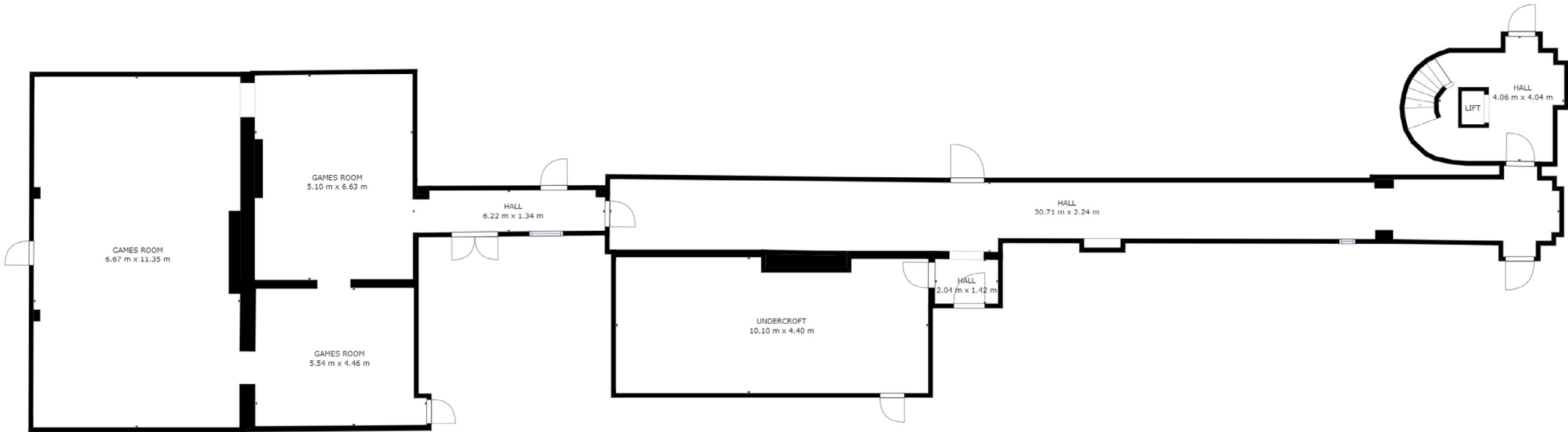
Windsor Room: 10





**Cumberland
Lodge**

Main Lodge Basement



Room capacities

Drawing Room: 60

Sitting Room: 18

Dining capacities

Cumberland Dining Room: 64

Prince Christian Dining Room: 40

Cumberland Dining Room and Prince Christian Dining Room (combined): 100

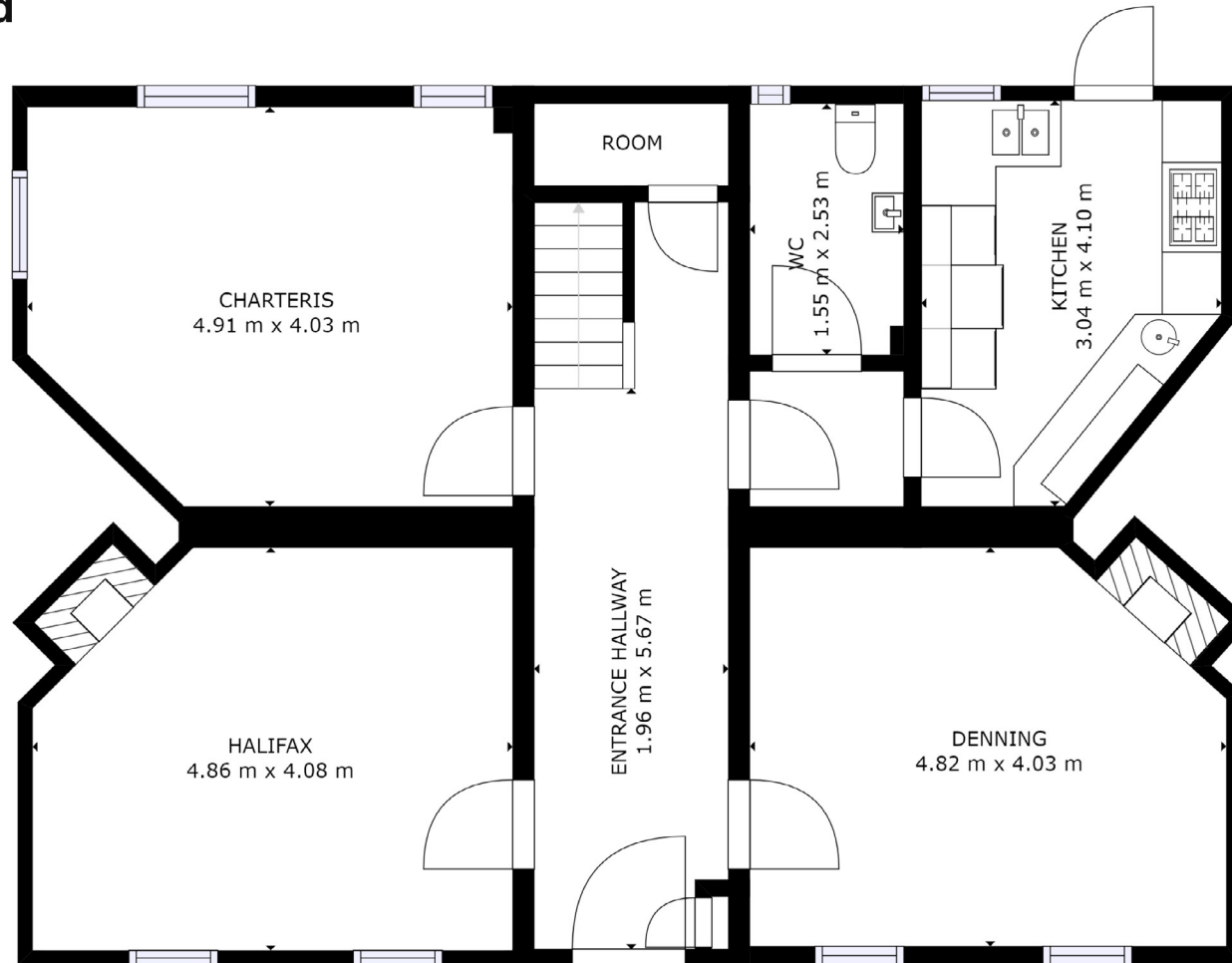
Princess Helena Dining Room: 16





**Cumberland
Lodge**

Groom's House Ground floor



Room capacities

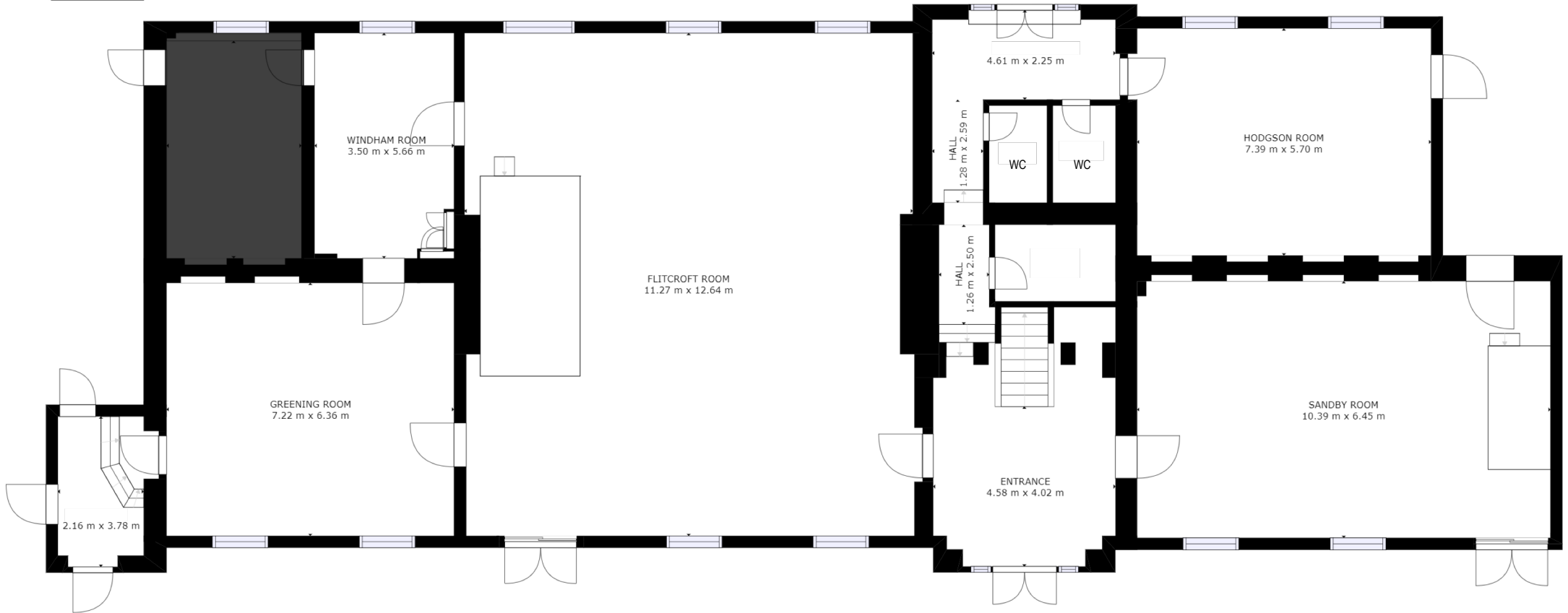
Charteris: 8
Denning: 10
Halifax: 10





**Cumberland
Lodge**

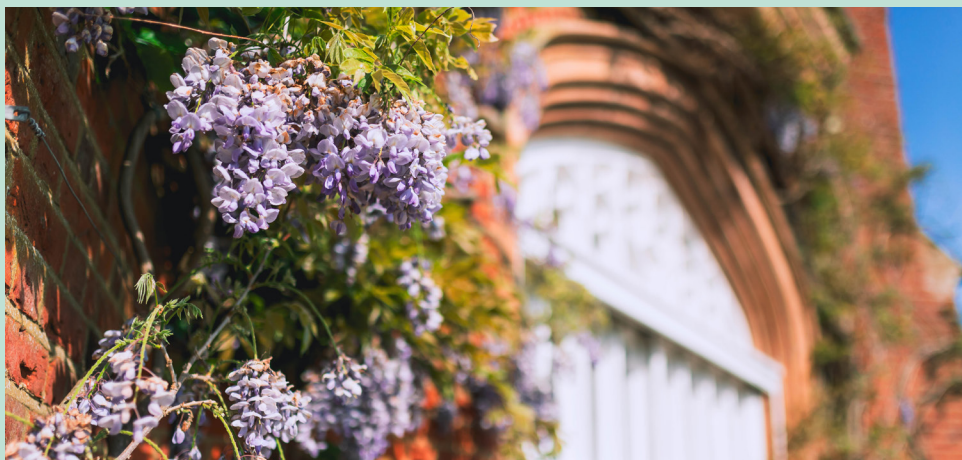
The Mews Ground floor



Room capacities

- Flitcroft: 100
- Greening: 30
- Hodgson: 30
- Sandby: 50
- Windham: 12





**Cumberland Lodge
The Great Park
Windsor SL4 2HP
+44 (0)1784 432316
enquiries@cumberlandlodge.ac.uk**

**www.cumberlandlodge.ac.uk
f X in @ @CumberlandLodge**