



Cumberland
Lodge

Information for visiting groups

About Cumberland Lodge

We can't change what we don't understand. That's why, in a world of extreme inequality and political polarisation, we believe it's not our differences that divide us, but our inability to recognise, discuss, debate and respect those differences.

Cumberland Lodge is an educational charity and social enterprise that exists to empower young people to lead the conversation around social division. Providing them with the skills, perspective and confidence to question, challenge and understand some of the most complex social issues of our time.

Set in the heart of Windsor Great Park, this is a space for challenging conversations. An open door to new perspectives. Where great minds don't always think alike.

A place where a multi-generational, intercultural, cross-sector programme of conferences, talks and events means that people from all walks of life, can come together to be seen, heard and understood.

A space for common ground. Where open dialogue can close divides. And the leaders and change makers of the future can learn how to agree to disagree, better – creating a more peaceful, open and inclusive society, one conversation at a time.

This pack provides you with information to help you prepare for your visit to Cumberland Lodge. We also invite you to find out more about our work by visiting the [About](#) section of our website.

Cumberland Lodge
The Great Park
Windsor
SL4 2HP
01784 432316
cumberlandlodge.ac.uk
[@cumberlandlodge](https://twitter.com/cumberlandlodge)
enquiries@cumberlandlodge.ac.uk

Cumberland Lodge is a company limited by guarantee.
Company no. 5383055. Registered charity no. 1108677

Guest information

Arrival and departure

There is ample free parking at Cumberland Lodge. If you are arriving by train, the nearest station is Egham, where taxis are available. Please see How to Find Us on page 5, for further details.

On arrival at the Lodge, you will be welcomed at Reception by a member of our Meetings & Events team or one of our Night Porters, and given an electronic pass for your bedroom and our main entrances. This pass must be returned to Reception before you leave.

Please vacate your bedroom by 9am on the day of departure, to enable our housekeepers to prepare it for our next arrivals, unless a later time has been agreed for your group. The Receptionist or a member of our Meetings & Events team will advise you about where luggage can be stored.

Accessibility

There are two en-suite bedrooms in the main building that are suitable for guests with additional mobility needs, and accessible to wheelchairs.

A lift large enough for wheelchairs provides access to all floors in the main building. There are also wheelchair accessible, ground floor public toilets in the main building and Groom's House.

Our main conference room in the Mews is wheelchair accessible and fitted with a hearing loop. We also have a portable hearing loop for use in other rooms. Please notify Reception on arrival if you require any assistance.

Bedrooms

We have 58 en-suite bedrooms, each with its own individual character, spread across three buildings: [the Lodge](#), [the Mews](#), and [Groom's House](#). Most of them can be arranged with twin beds. Towels and toiletries are provided.

Cash machines

The nearest ATMs are in Egham and Old Windsor.

Chapel

When not pre-booked by other visiting groups, our small [Chapel](#) is a multifaith space available for use for private prayer, reading or reflection, on the first floor of the main building. It can be accessed via the Tapestry Hall staircase.

Meals and bar

Meal times, including morning coffee and afternoon tea, are arranged around the requirements of each group. Your group leader will give you full details. However, standard times for main meals are:

| | | |
|-----------|--------|--------------------|
| Breakfast | 8.00am | Monday to Saturday |
| | 9.00am | Sunday |
| Lunch | 1.00pm | |
| Dinner | 7.15pm | |

Please notify us in advance of any special dietary requirements, including Halal meals. Kosher meals can be arranged for an additional cost, provided that we receive sufficient notice.

The Bar is generally open before dinner and after the evening conference sessions, but please check with your group leader as to opening times during your visit.

Merchandise

A small range of merchandise can be purchased from Reception. This includes Cumberland Lodge mugs, tote bags, postcards, and honey from the Cumberland Lodge beehives.

Reception

Cumberland Lodge is staffed 24 hours a day. During the daytime, a member of our Meetings & Events team is always available, and Night Porters are on duty overnight. If they are not available at Reception, please press the button on the desk and they will respond as soon as possible.

Recreational facilities

We have a wide range of recreational facilities – as well as 5,000 acres of beautiful parkland on our doorstep.

We have a tennis court, and rackets and balls can be borrowed from Reception, free of charge. Croquet, boules and rounders can be played in the garden, weather permitting. In the Basement, there are pool and table-tennis tables and a recreational space, suitable for parties or relaxation.

Board games are available in the Bar, and there are televisions in the Sitting Room and Basement. You are welcome to play the piano in the Drawing Room, provided that you do not disturb fellow guests, and we encourage you to use our multi-faith Chapel and Library when they are not otherwise in use.

We encourage visiting groups to allow time for a walk in the Great Park, and a map with suggested walks is available from Reception. You can also find suggested running routes on Strava by searching 'Cumberland Lodge'.

Safeguarding

Cumberland Lodge is committed to providing a safe environment for all who work or stay with us, with special provisions for children (those aged under 18) and vulnerable adults. Our Safeguarding Policy is reviewed annually and a copy is available on our website. You can download our Safeguarding Policy Statement, which summarises our approach and provides useful contact details, from the [Frequently Asked Questions](#) page in the Hire section of our website.

For enquiries about our approach to safeguarding and relevant codes of conduct, or for any concerns relating to safeguarding during your stay, please contact Professor Melissa Butcher (Programme Director and our Safeguarding Co-ordinator) at m butcher@cumberlandlodge.ac.uk or on 01784 497799. Our Trustee with responsibility for safeguarding matters is Ingrid Tennessee.

Security

Cumberland Lodge is located in a safe, secluded environment. The site is covered by CCTV for security reasons. We ask that guests wear the lanyards supplied with their keycards at all times. Our external doors are locked, with access via electronic keycards only. Our bedrooms are lockable and equipped with safes for small personal items.

WiFi

WiFi is free and available throughout the site (no password required). Laptops, screens, and projectors are available in most conference rooms as standard. You are advised to bring your own laptops/tablets.

How to find us

For full travel directions to Cumberland Lodge, please visit the [Location](#) section of our website.

By car

Please use postcodes SL4 2JA (if travelling from Windsor) or TW20 0XU (if travelling from Staines) on sat-nav to reach one of two gates into Windsor Great Park, before following signs to Cumberland Lodge.

By rail

The closest stations, all a 10-15 minute drive away, are Egham (Reading - Waterloo Line), Windsor & Eton Riverside (Windsor - Waterloo Line) and Windsor & Eton Central (Windsor - Slough - Paddington Line).

By taxi

We recommend booking taxis in advance. We generally use Windsor Cars on 01753 677677.

Please note

We ask everyone who visits or stays overnight at Cumberland Lodge to abide by the following policies:

Phones

As a charity that exists to inspire dialogue and debate, we strongly encourage you to engage in conversation with your fellow guests and to avoid using mobiles in our dining rooms.

Alcohol

It is strictly forbidden to bring alcoholic drinks into Cumberland Lodge. All visitors are warned that, if discovered, any alcohol brought into the Lodge will be confiscated until their departure. Offending students may be sent home and, if the incident is serious, the department may be asked not to return to the Lodge. Group leaders and visiting staff are asked to ensure this rule is taken seriously. Alcoholic drinks can be purchased from our Bar.

Smoking

Smoking is not permitted inside the buildings (including e-cigarettes and vapes). Ashtrays are located a short distance from the main entrances.

Parties

We do not allow parties in bedrooms or flats. A dedicated space for parties and recreation is available in the Basement (The Vaults).

Damage to property

The organisation you are visiting with will be charged for any incidents of damage to our property during your stay. This includes smoking indoors, soiling of bedrooms, physical damage and vandalism. Your group leader has been provided with full details of fines that may be incurred.

Access to private property

While we encourage guests to explore our gardens and to take walks in Windsor Great Park during free time, please do not attempt to access the woodland and fields to the west and south of Cumberland Lodge, beyond the boundary fences (shown on the map). For reasons including wildlife activity and your own safety, trespassing in these areas is strictly forbidden. These are private rural lands which are managed by the Crown Estate's park-keeping team for nature, not for public use, and as such the terrain is not suitable for walking.

To respect the privacy of our neighbours in the Mews properties, please do not go beyond signs that say 'Private' or 'No Admittance'. We also ask that groups keep noise levels to a minimum in the evenings.

Please note that access to the roof is strictly prohibited.

If you would like recommendations for some of the best ways to enjoy our Great Park surroundings on foot, we have a guide with suggested walking and running routes, which is available from Reception, and the routes are available on the Cumberland Lodge Strava profile. If you are planning to go for a walk or run, please note the guidance below on access to the Great Park outside of daylight hours.

After dark

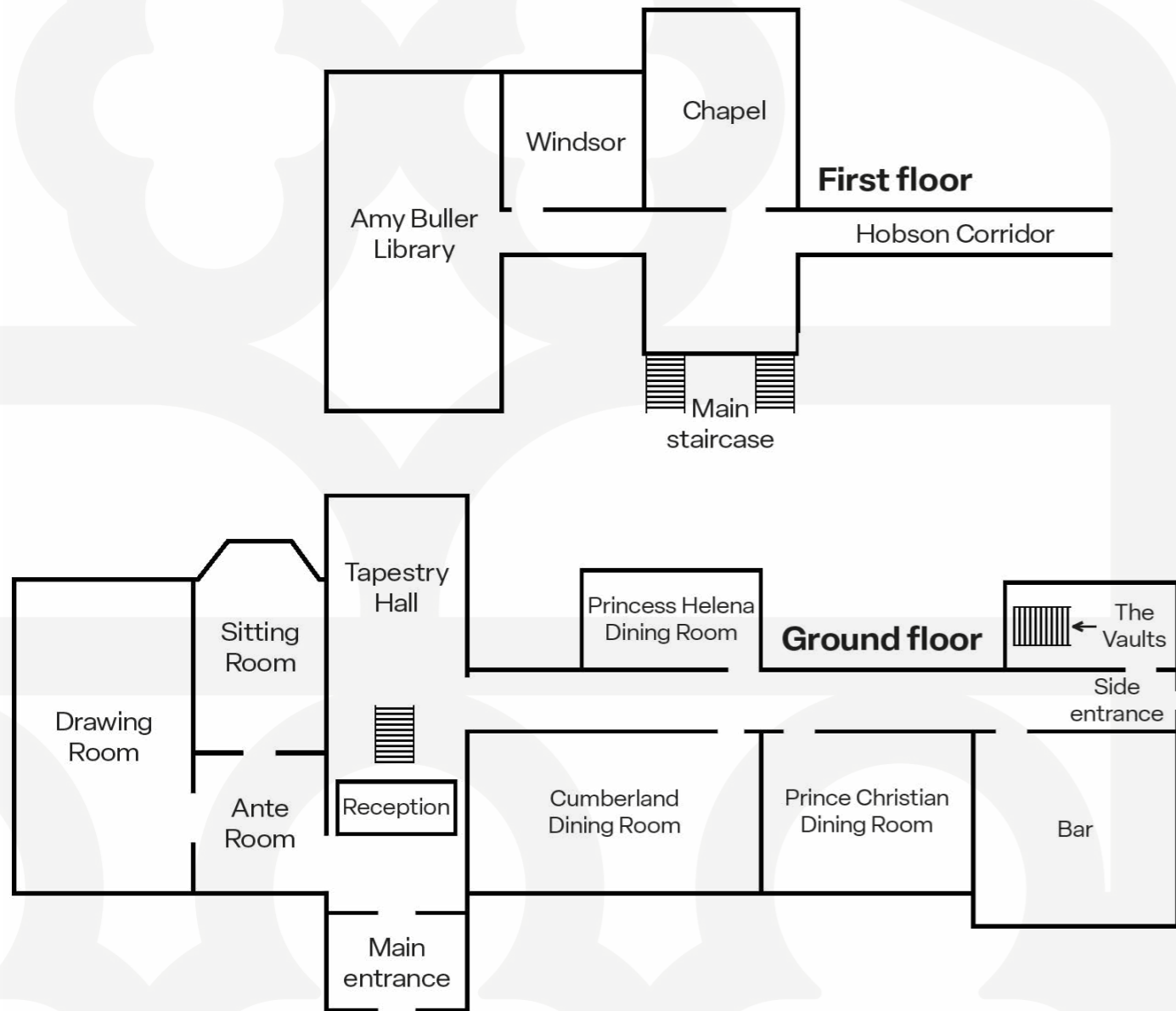
At the request of The Crown Estate, walking, running or cycling in Windsor Great Park is not permitted after dark. If you go outside between dusk and dawn, please stay within the grounds of Cumberland Lodge. There is no lighting in the wider Great Park, and we cannot be responsible for your safety once you are outside of our boundaries, which are illustrated on the map below.

We encourage group leaders to work with us on reminding delegates of the guidance provided to ensure a safe and enjoyable visit for all.

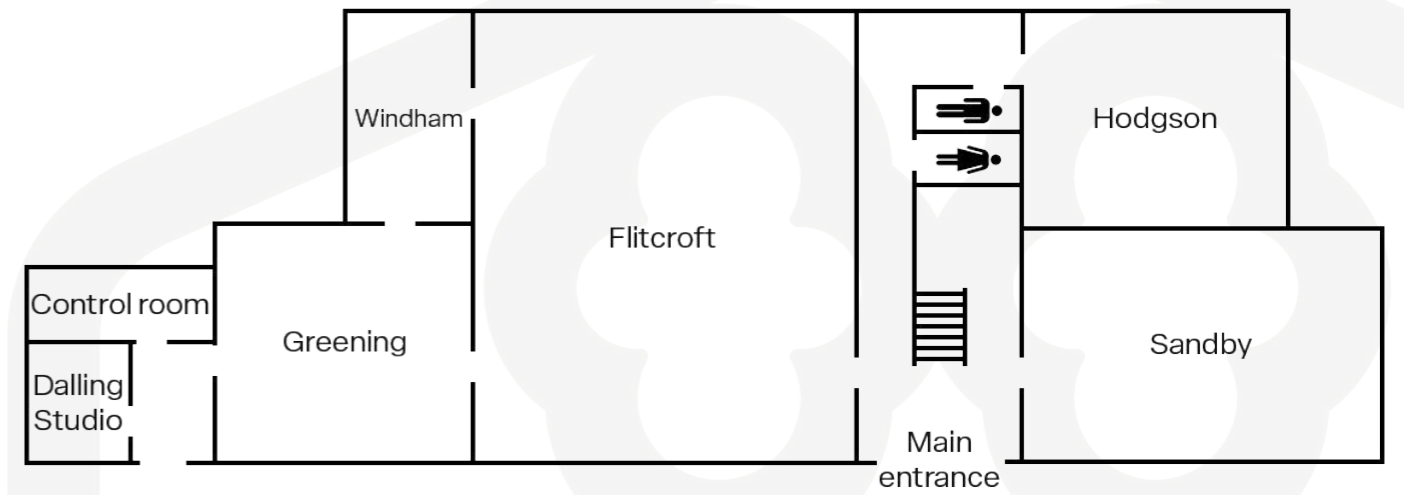


Floorplans

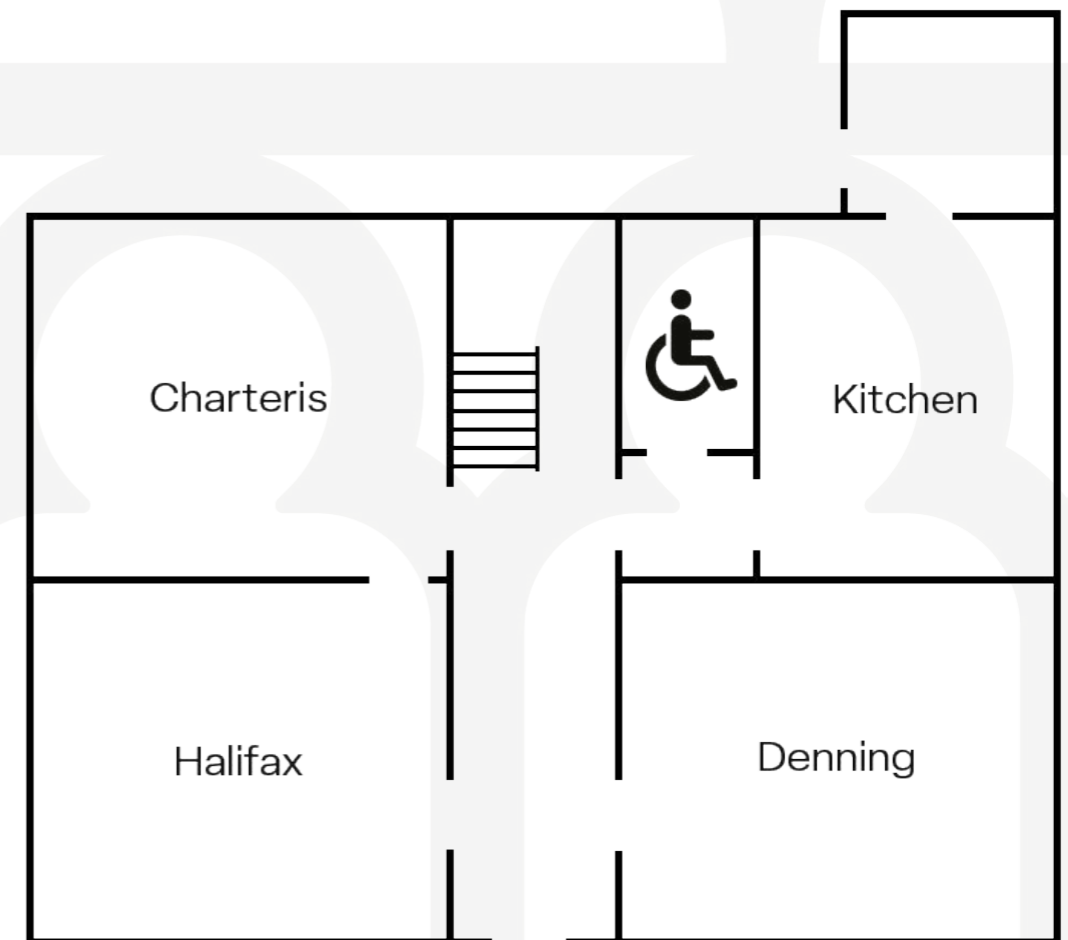
Main Lodge




The Mews



Grooms' House





Cumberland Lodge
Windsor Great Park, Windsor, SL4 2HP
01784 432316

cumberlandlodge.ac.uk
enquiries@cumberlandlodge.ac.uk

Cumberland Lodge is a company limited by guarantee.
Company no. 5383055. Registered charity no. 1108677