



Cumberland
Lodge

Information for students

About Cumberland Lodge

We can't change what we don't understand. That's why, in a world of extreme inequality and political polarisation, we believe it's not our differences that divide us, but our inability to recognise, discuss, debate and respect those differences.

Cumberland Lodge is an educational charity and social enterprise that exists to empower young people to lead the conversation around social division. Providing them with the skills, perspective and confidence to question, challenge and understand some of the most complex social issues of our time.

Set in the heart of Windsor Great Park, this is a space for challenging conversations. An open door to new perspectives. Where great minds don't always think alike.

A place where a multi-generational, intercultural, cross-sector programme of conferences, talks and events means that people from all walks of life, can come together to be seen, heard and understood.

A space for common ground. Where open dialogue can close divides. And the leaders and change makers of the future can learn how to agree to disagree, better – creating a more peaceful, open and inclusive society, one conversation at a time.

This pack provides you with information about our work with students. We also invite you to find out more about our work by visiting the [About](#) section of our website.

Cumberland Lodge
The Great Park
Windsor
SL4 2HP
01784 432316
cumberlandlodge.ac.uk
@cumberlandlodge
enquiries@cumberlandlodge.ac.uk
Cumberland Lodge is a company limited by guarantee.
Company no. 5383055. Registered charity no. 1108677

About your stay

Accommodation

Students normally share twin-bedded rooms, allocated in advance in consultation with your university. All of our bedrooms have en-suite bathrooms, with towels and toiletries provided. Ironing facilities are also available.

Accessibility

We strive to ensure that all our guests feel welcome and have a comfortable, safe, and enjoyable stay. If you will require any special assistance, please inform your group leader before arriving. Our staff will also be happy to help.

Arrivals and departures

On arrival, you will be welcomed by Cumberland Lodge staff, and given electronic keycards for your rooms and external doors. When everyone is signed in, a member of staff will give a short talk with details on the arrangements for your stay.

Please vacate your room by 9.00am on your day of departure, unless a later time has been agreed for your group. The receptionist or a member of our Meetings & Events team will let you know where you can leave luggage.

At the end of your visit, remember to return your keycard to Reception.

Meals

Please see your programme for specific meal times, however our usual times for main meals are:

Breakfast	8.00am	Monday to Saturday (full English)
	9.00am	Sunday (continental)
Lunch	1.00pm	
Dinner	7.15pm	

Group leader

Each visiting group has a group leader, nominated from amongst its organisers.

Cumberland Lodge representative

Each group is allocated a representative from Cumberland Lodge, who will be resident during your stay, and help to host your visit.

Reception

Cumberland Lodge is staffed 24 hours a day. During the daytime, a member of our Meetings & Events team is always available and Night Porters are on duty overnight. If they are not available at Reception, please press the button on the desk and they will respond as soon as possible.

WiFi

WiFi is free and is available throughout the buildings (no password required). Guests are advised to bring their own laptops/tablets.

Chapel

On most Sundays, guests at the Lodge may have the opportunity to attend services at the Royal Chapel (a Church of England place of worship). The dress code is 'smart casual' (no jeans, shorts, T-shirts, flip-flops or trainers, please). For security reasons, photographic ID is essential for access to the Royal Chapel – a passport or driving licence. No mobile phones, cameras, or large handbags are allowed. A collection for charity is taken during the service.

Bar

The Bar is generally open before dinner and after evening conference sessions. You will be advised of opening times by your group leader. Hot drinks are also served in the Bar after lunch and dinner, and mid-morning and late afternoon.

Recreational facilities

We have a wide range of recreational facilities, as well as 5,000 acres of beautiful parkland on our doorstep. We have a tennis court, and rackets and balls can be borrowed from Reception, free of charge. Croquet, boules and rounders can be played in the garden, weather permitting. We offer table-tennis and pool tables in the Basement, along with recreational space, suitable for evening parties and relaxation.

Board games are available in the Bar, and there are televisions in the Sitting Room and Basement. Guests are welcome to use our multi-faith Chapel and Library when they are not in use. You are welcome to play the piano in the Drawing Room, provided that you do not disturb your fellow guests.

We encourage visiting groups to allow time for a walk in Windsor Great Park, and a map with suggested walks is available from Reception. You can also find suggested running routes on Strava by searching 'Cumberland Lodge'. Local attractions include Windsor Castle, St George's Chapel, Savill Garden, Valley Gardens, Virginia Water, Eton College, and the Magna Carta, J.F. Kennedy, and Royal Air Force memorials at Runnymede.

Safeguarding

Cumberland Lodge is committed to providing a safe environment for all who work or stay with us, with special provisions for children (those aged under 18) and vulnerable adults. Our Safeguarding Policy is reviewed annually and a copy is available on our website. You can download our Safeguarding Policy Statement, which summarises our approach, from the [Policies](#) page of our website.

For enquiries about our approach to safeguarding and relevant codes of conduct, or for any concerns relating to safeguarding during your stay, please contact Professor Melissa Butcher (Programme Director and our Safeguarding Co-ordinator) at mbutcher@cumberlandlodge.ac.uk or on 01784 497799. Our Trustee with responsibility for safeguarding matters is Ingrid Tennessee.

Security

Cumberland Lodge is located in a safe, secluded environment. The site is covered by CCTV for security reasons. We ask that guests wear the lanyards supplied with their keycards at all times. Our external doors are locked, with access via electronic keycards only. Our bedrooms are lockable and equipped with safes for small personal items.

Merchandise and cash machines

A small range of merchandise can be purchased from Reception. This includes Cumberland Lodge Honey, guidebooks, books, and prints. Please note that the nearest ATMs are in Egham and Old Windsor.

Please note

We ask everyone who visits or stays overnight at Cumberland Lodge to abide by the following policies:

Phones

As a charity that exists to inspire dialogue and debate, we strongly encourage you to engage in conversation with your fellow guests and to avoid using mobiles in our dining rooms.

Alcohol

It is strictly forbidden to bring alcoholic drinks into Cumberland Lodge. Only alcohol that is purchased from our Bar may be consumed on site. Students should be warned that, if discovered, any alcohol brought into the Lodge will be confiscated. Offending students may be sent home and, if the incident is serious, the department may be asked not to return to the Lodge. Group leaders and visiting staff are asked to ensure this rule is taken seriously.

Smoking

No smoking is permitted inside the buildings (including e-cigarettes and vapes). Ashtrays are located a short distance from the main entrances.

Parties

We do not allow parties in bedrooms or flats. A dedicated space for parties and recreation is available in the Basement.

Damage to property

The organisation you are visiting with will be informed of, and charged for, any incidents of damage to our property during your stay. This includes smoking indoors, soiling of bedrooms, physical damage and vandalism.

Access to private property

While we encourage guests to explore our gardens and to take walks in Windsor Great Park during free time, please do not attempt to access the woodland and fields to the west and south of Cumberland Lodge, beyond the boundary fences (shown in the map below). For reasons including wildlife activity and your own safety, trespassing in these areas is strictly forbidden.

To respect the privacy of our neighbours in the Mews properties, please do not go beyond signs that say 'Private' or 'No Admittance'. We also ask that groups keep noise levels to a minimum in the evenings.

Please note that access to the roof is strictly prohibited.

If you would like recommendations for some of the best ways to enjoy our Great Park surroundings on foot, we have a guide with suggested walking and running routes, which is available from Reception, and the routes are available on the Cumberland Lodge Strava profile. If you are planning to go for a walk or run, please note the guidance below on access to the Great Park outside of daylight hours.

After dark

At the request of The Crown Estate, walking, running or cycling in Windsor Great Park is not permitted after dark. If you go outside between dusk and dawn, please stay within the grounds of Cumberland Lodge. There is no lighting in the wider Great Park, and we cannot be responsible for your safety once you are outside of our boundaries, which are illustrated on the map below.

We encourage group leaders to work with us on reminding students of the guidance provided to ensure a safe and enjoyable visit for all.



Getting involved and staying in touch

Keeping in touch

If you would like to receive news and updates from Cumberland Lodge by email, including details of our upcoming events and publications, or opportunities for students, please sign up on our website at: cumberlandlodge.ac.uk/contact-us

Key contacts

Acting Chief Executive	Mike Durham
Programme Director	Professor Melissa Butcher
Hospitality Director	Merrill Ryan
Meetings & Events Manager	Sarah Mann
Senior Duty Manager	Alison Taggart
Duty Managers	Nicola Cole and Beth Smith
Communications & Engagement Manager	Nicola Hine
Communications & Engagement Officer	Chris Woods
Digital Communications Officer	Jack Verduyn
Head Chef	Rob Szewczyk
Programme Officers	Christina Ogwang and Munny Purba
Programme Administrator	Natalja Lipka
Buildings Manager	Colin Baker
Events & IT Technician	Graham Hobbs
Senior Night Supervisor	Stephen Martin
Night Porters	Colin Singleton and Malcolm Gadd
Weekend Night Porters	Tauseef Nazir

Exploring Ethics

Inspired by our founding principles as an educational charity focused on developing ethical leadership, our Exploring Ethics sessions are designed to encourage delegates to reflect critically on the moral, cultural, and intergenerational dimensions of contemporary social challenges. These interactive sessions are led by a member of the Cumberland Lodge Programme Team and usually last one to two hours.

We have a range of sessions on offer, and are always working on new sessions. The following sessions are indicative of what we can offer:

Disagreeing Well

Dialogue and debate is at the heart of what we do. We argue, we disagree, but we aim to disagree well. This interactive workshop is designed to help participants understand their own communication preferences, to recognise the different values systems from which communication styles and disagreement can emerge, and to develop strategies in order to argue well alongside respect for differences of opinion.

Ethics and AI

The intersection between ethics, AI, machine learning, and our digital futures is a pressing concern. This session explores how ethical frameworks might impact on the creation, ownership, dissemination and use of artificial intelligence and digital technologies, from the workplace to home.

Everyday Ethics

Working with participants we develop an understanding of where our ethical frameworks come from, how they inform our ideas about what is 'good', and how they impact on our decision making in both our personal and professional lives.

Navigating Differences

Living in complex, culturally diverse societies, where debates on national values and identity can generate conflict, there is a need to develop skills that enable us to live and work together better. This session focuses on understanding cultural differences, where they come from, their impact on communication, leadership and team work, and how we can negotiate moving forward.

The Ethics of Free Speech

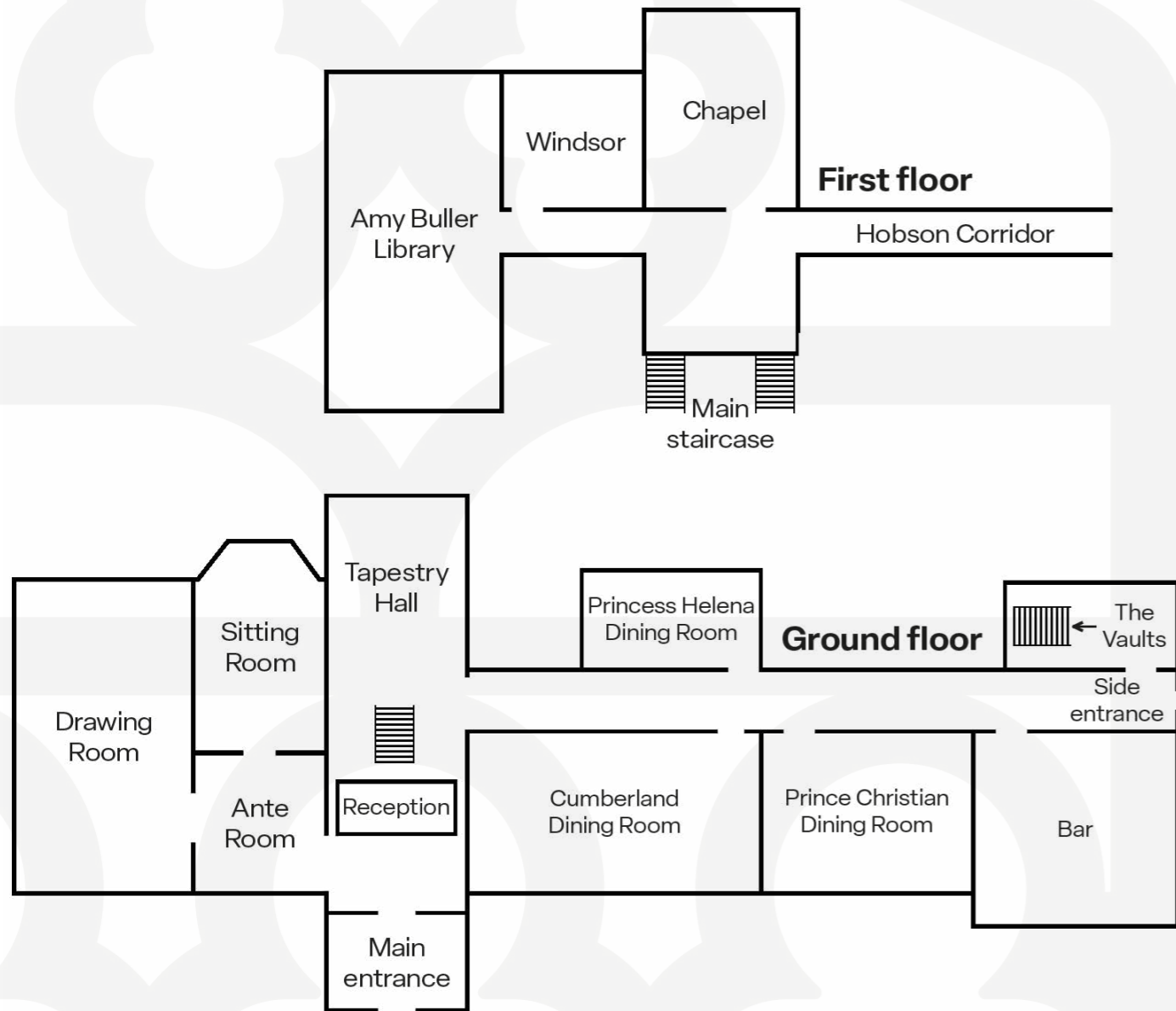
Polarisation in current political debates centres on the limits of 'free speech': is the answer to 'bad' speech more 'good' speech, or do we have a responsibility at times to restrict speech in order to prevent harm? This session provides space for that ethical dilemma to be analysed and discussed from different perspectives.

The Future of Democracy

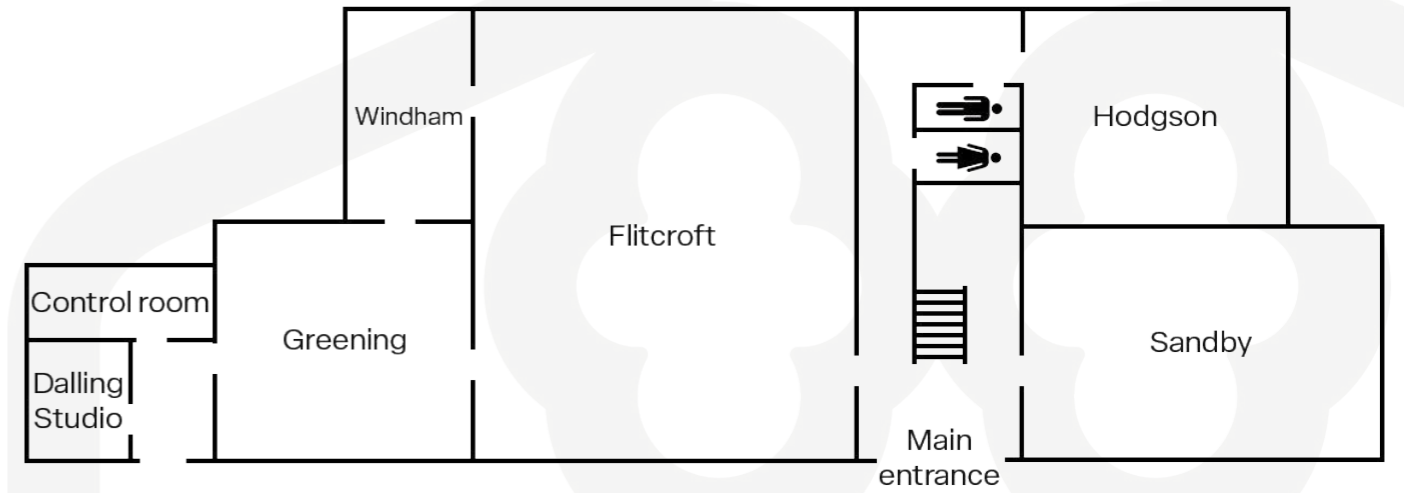
In light of a perceived decline in democracy globally, this session explore questions such as: how should politics and ethics work together? How can ethics be embedded in our democratic institutions and practices? And, what is the role of ethics in the Rule of Law?

Floorplans

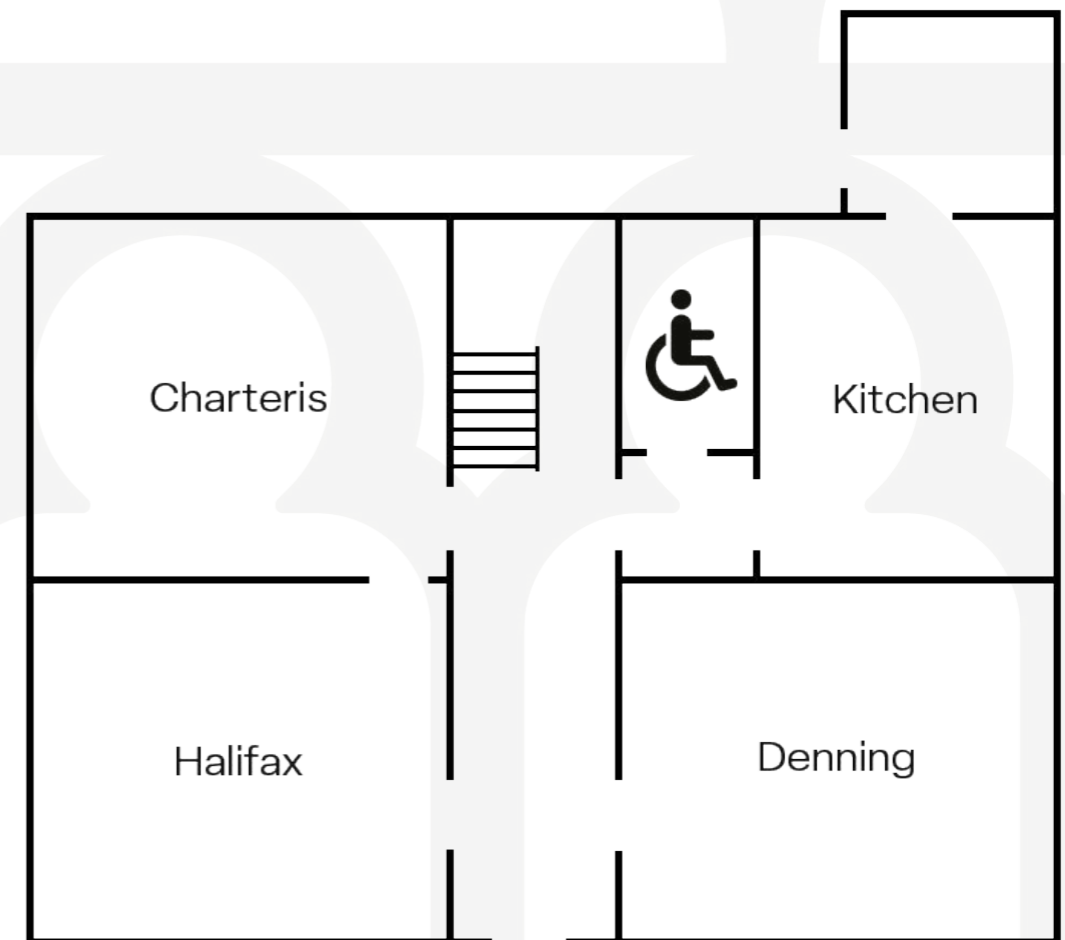
Main Lodge




The Mews



Grooms' House





Cumberland Lodge
Windsor Great Park, Windsor, SL4 2HP
01784 432316

cumberlandlodge.ac.uk
enquiries@cumberlandlodge.ac.uk

Cumberland Lodge is a company limited by guarantee.
Company no. 5383055. Registered charity no. 1108677